

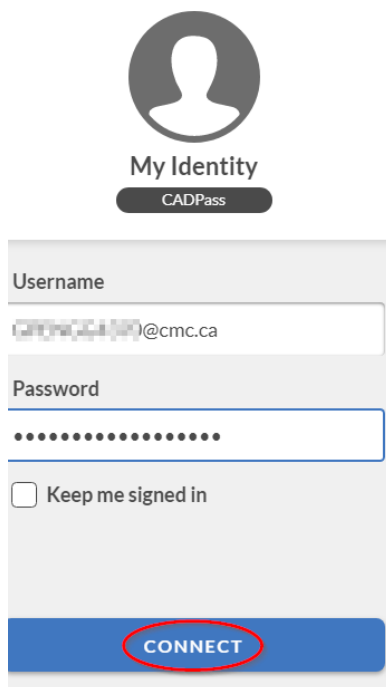
Upgrading your ANSYS Licenses from Student to Teaching with CADpass

By Engineering IT

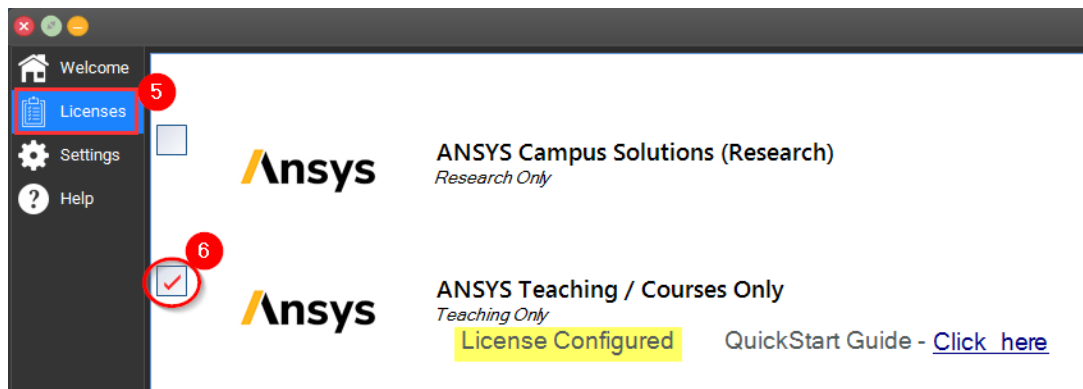
October 4, 2020

The ANSYS Student Edition restricts some functions and model sizes to levels that might not be sufficient for your coursework. Students registered in ENGG courses using ANSYS have access to an upgraded license which can be applied to your student edition installation by following the instructions below:

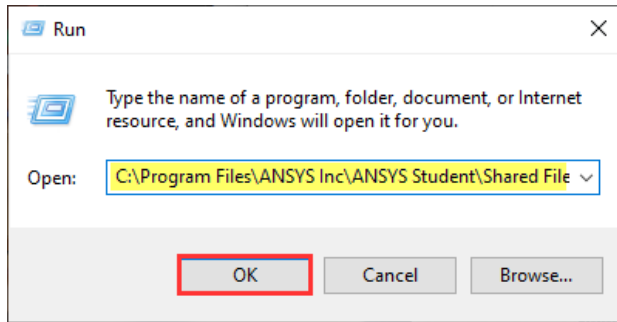
1. Download and install the ANSYS student edition according to the instructions on the [Engineering Software Catalog](#)
2. Download and install CMC CADpass according to the instructions on the [Engineering Software Catalog](#)
3. Open **AppGate SDP** and login using the credentials provided by your course instructor



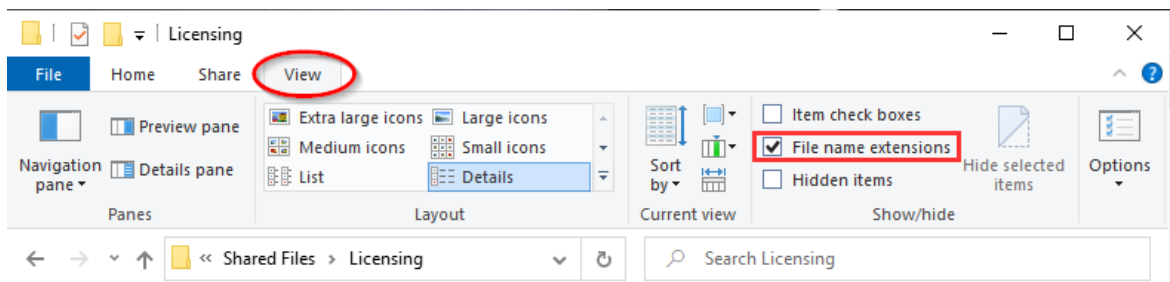
4. Open **CADpass R20**
5. Click **Licenses**
6. Check the box next to **ANSYS Teaching / Courses Only**. Ensure that it says **License Configured**



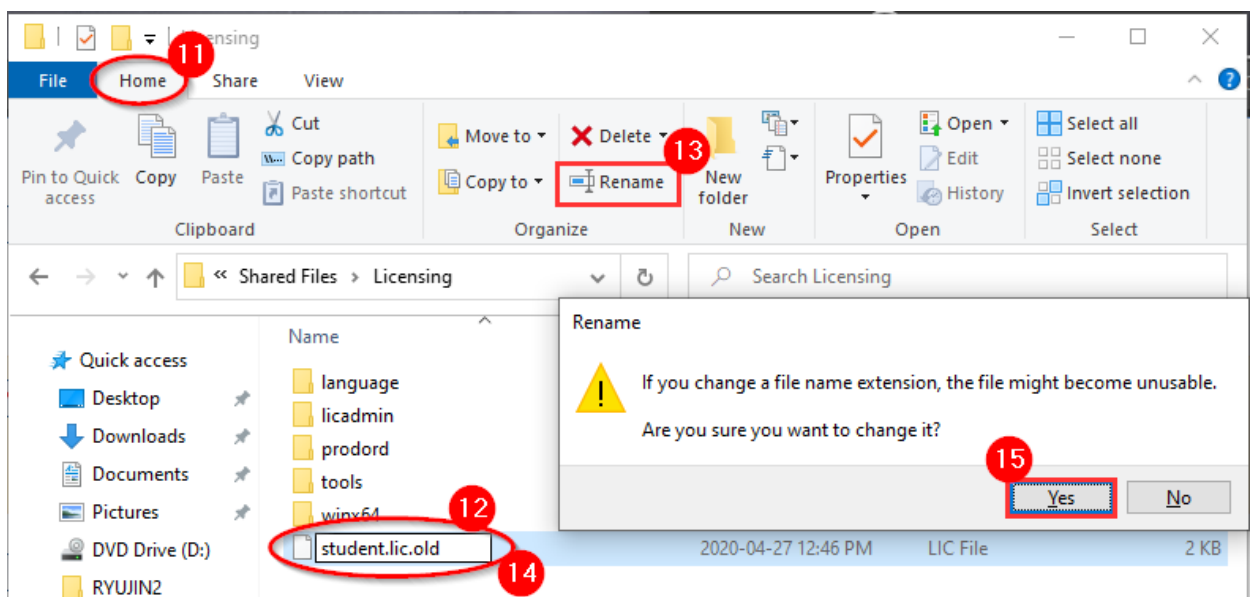
7. Press the **Windows Key + R** to open the Run dialog
8. Copy and paste the following path into the **Open** field and click OK:
C:\Program Files\ANSYS Inc\ANSYS Student\Shared Files\Licensing



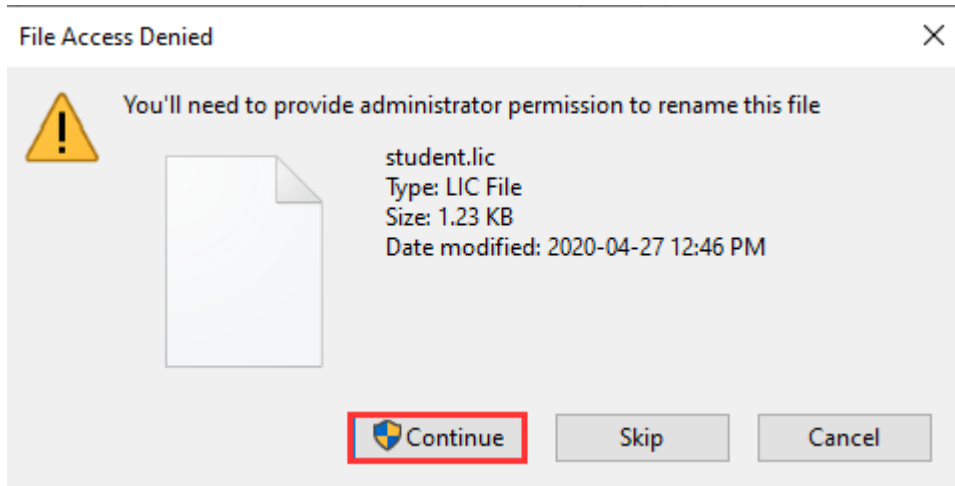
9. In the Windows Explorer window, click the **View** tab
10. Check the box next to **File name extensions**



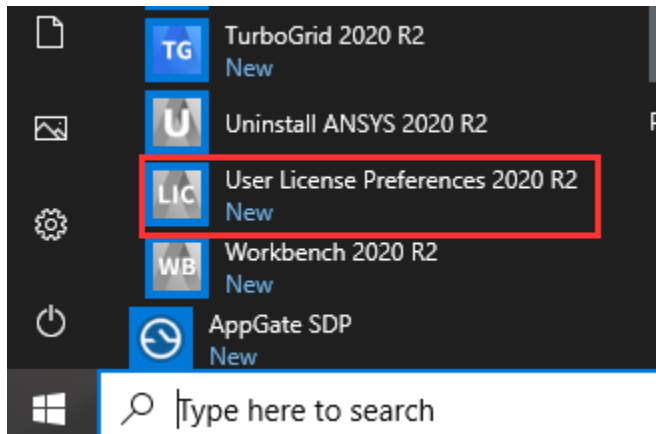
11. In the same Explorer window, click the **Home** tab
12. Click on the file named **student.lic**
13. Click Rename in the top bar
14. Change the name to **student.lic.old**
15. Click **Yes** when prompted to change the extension



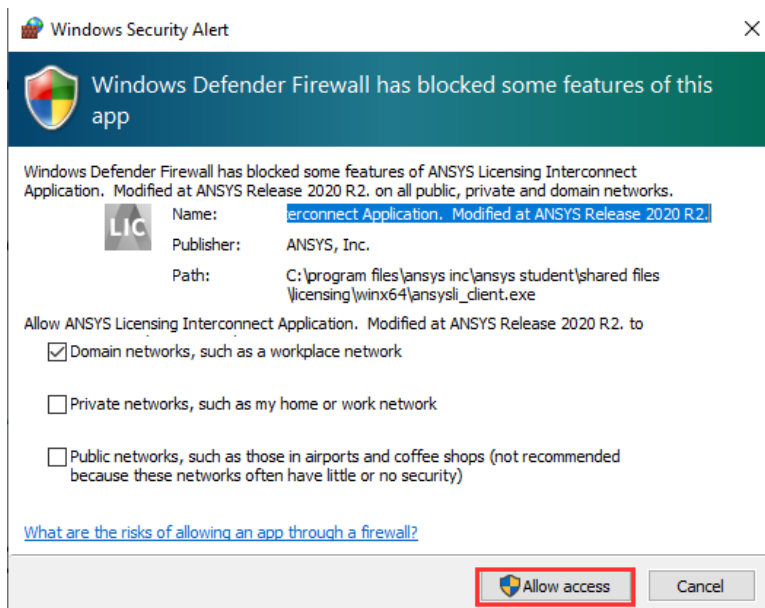
16. In the next prompt, click **Continue**



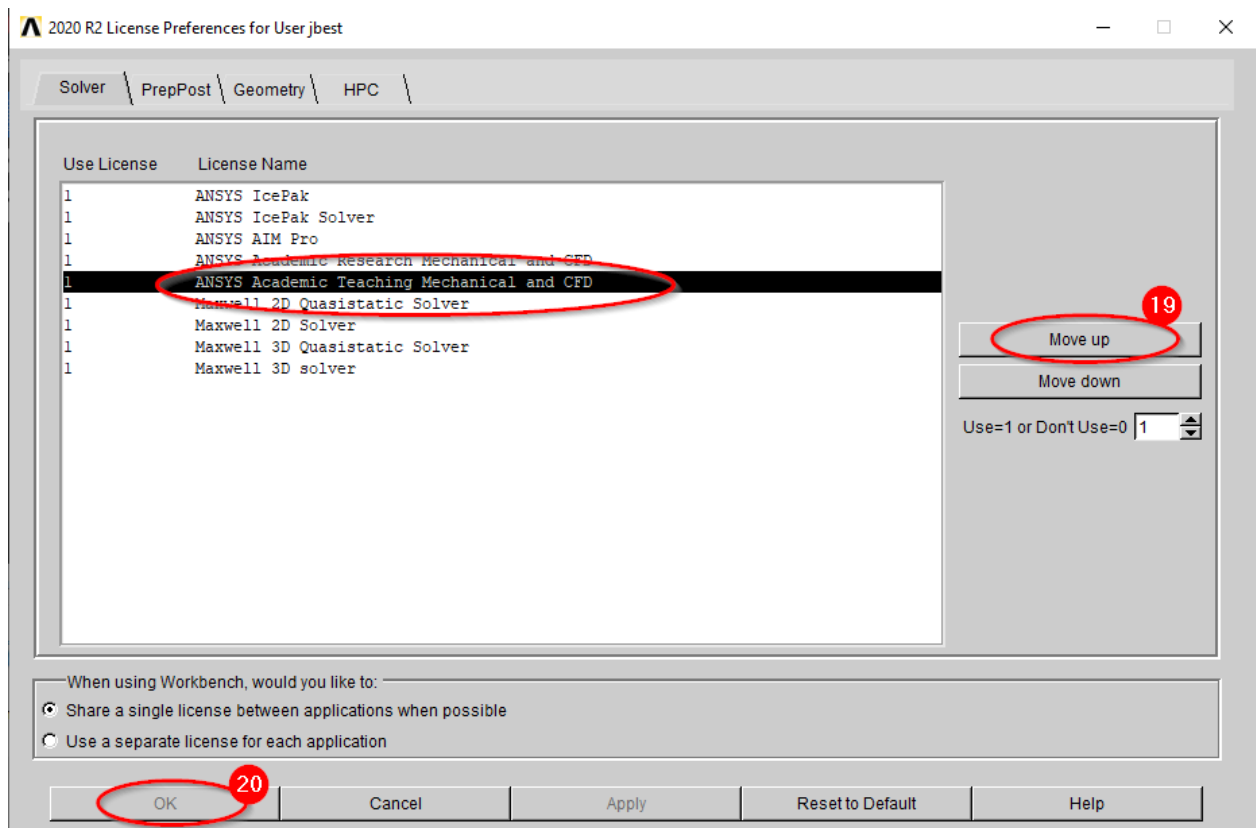
17. In the Start Menu, open **User License Preferences 2020 R2** under ANSYS 2020 R2



18. If prompted for a firewall exception, click **Allow access**



19. If CADpass is working correctly, your licenses should look like the following. Click the **ANSYS Academic Teaching Mechanical and CFD** licenses and then click **Move Up**



20. Click **OK** and then start Workbench from the Start Menu. The student model size restrictions should now be increased to the teaching level.

Please note that once this change is made, CADpass R20 and AppGate SDP must be running in order to use ANSYS.